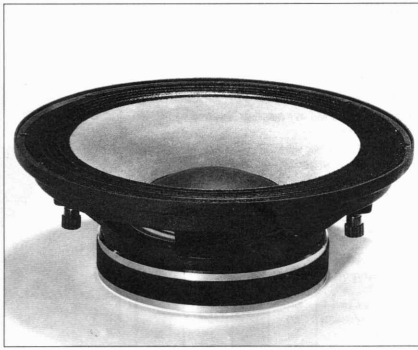
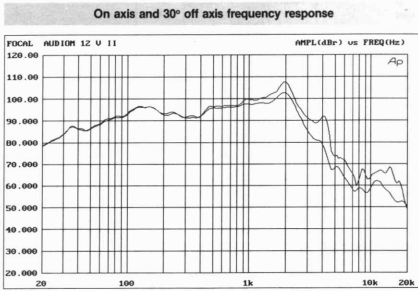


FOCAL® AUDIOM 12 V2 - WOOFER

- Chassis: Alu cast. 312mm diam. x 119,5mm (depth). 7,500g total.
- Magnet weight: 1900g.
- Magnet dimensions: 185mm diam. x 36mm.
- Voice coil: Kapton® former, 77mm diam. x 15mm high. Edgewound alu flat wire. Super high BL high power winding.
- Emissive surface: Polyglass cone, straight profile.
- Suspension: Small pleats with Latex coating.
- Comment: Very high sensitivity (95,5dB/W/m). High power and low distortion. This unit can be used as mid-bass in high power applications or as a woofer in high quality speakers (90L).



Specifications	Parameter	Value	Units
Rated power handling	Fs	25.08	Hz
Nominal/Program (W)	Vas	3185	m³
Voice coil	Cts	205	
Diameter/Length (mm)	Oes	212	
Nom./Mini impedance (Ω)	Cms	5.87	
DC resistance (Ω)	Rcc	6	Ω
Inductance (mH)	D	26	m
Former	Sd	0.531	m²
Layers	Cas	2.268E-06	m³/N
Wire	Mas	17.76	kg/m²
Surround	Ras	478.8	Ω.ac
Magnet	Cms	0.008045	m/N
Diameter (mm)	Mms	0.501	kg
Weight (g)	Rms	1.34	kg/s
Flux density = B (T)	Ces	224.58	μF
Gap height (mm)	Les	179.37	mH
Sensitivity	Res	165.9	Ω
2.8V/1m (dB)	Bl	14.93	N/A
Net weight (kg)	Γ	298.2	ms⁻²A⁻¹
Xmax (mm)	N	2.28	%
	No	95.58	dB/1W/1m



Vented cabinet: Vb (l)

Align.	Rg:0	0.4	0.8	0.8	1.0
4	53.34	60.40	64.09	67.88	71.76
5.7	76.00	86.08	91.33	96.72	102.26
8	106.67	120.81	128.18	135.75	143.52

Vented cabinet: F-3 (Hz)

Align.	Rg:0	0.4	0.8	0.8	1.0
4	61.29	57.59	55.91	54.33	52.84
5.7	51.34	48.24	46.84	45.51	44.26
8	43.34	40.72	39.53	38.42	37.36

Vented cabinet: Fb (Hz)

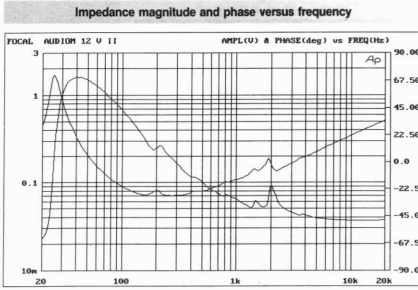
Rg:0	0.4	0.8	0.8	1.0	
Fb	47.80	44.92	43.61	42.38	41.21

Sealed cabinet: Vb (l)

Damping	Rg:0	0.4	0.8	0.8	1.0
.5	84.06	74.54	80.23	86.26	92.83
.577	45.81	52.89	56.89	60.88	64.86
.707	29.11	33.38	35.64	38.00	40.45

Sealed cabinet: F-3 (Hz)

Damping	Rg:0	0.4	0.8	0.8	1.0
.5	95.23	89.48	86.87	84.41	82.10
.577	90.04	84.61	82.14	79.81	77.62
.707	86.67	81.44	79.07	76.83	74.72

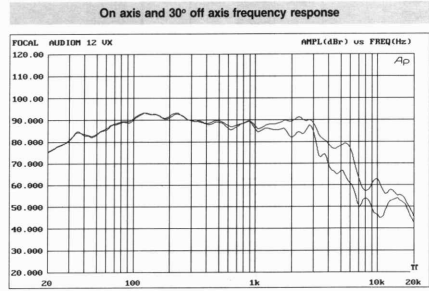


FOCAL® AUDIOM 12 VX - WOOFER

- Chassis: Alu cast. 312mm diam. x 123,5mm (depth). 11,500g total.
- Magnet weight: 3000g.
- Magnet dimensions: Multi magnet design exclusively from FOCAL, using a unique 12 magnets cluster configuration: low distortion and vastly improved cooling.
- Voice coil: Kapton® former, 77mm diam. x 22mm high. Edgewound copper flat wire. Super high BL ultra high power winding.
- Emissive surface: Polyglass cone, straight profile.
- Suspension: Coated foam high compliance positive half roll.
- Comment: Tremendous authority, shocking transients. Immense reserve of dynamics. Will work in 60L and up.



Specifications	Parameter	Value	Units
Rated power handling	Fs	23.55	Hz
Nominal/Program (W)	Vas	2376	m³
Voice coil	Cts	205	
Diameter/Length (mm)	Oes	233	
Nom./Mini impedance (Ω)	Cms	1.668	
DC resistance (Ω)	Rcc	6.1	Ω
Inductance (mH)	D	26	m
Former	Sd	0.531	m²
Layers	Cas	1.692E-06	m³/N
Wire	Mas	26.99	kg/m²
Surround	Ras	2395.24	Ω.ac
Magnet	Cms	0.006001	m/N
Diameter (mm)	Mms	0.761	kg
Weight (g)	Rms	6.75	kg/s
Flux density = B (T)	Ces	258.26	μF
Gap height (mm)	Les	176.78	mH
Sensitivity	Res	43.63	Ω
2.8V/1m (dB)	Bl	17.16	N/A
Net weight (kg)	Γ	225.6	ms⁻²A⁻¹
Xmax (mm)	N	1.28	%
	No	93.08	dB/1W/1m



Vented cabinet: Vb (l)

Align.	Rg:0	0.4	0.8	0.8	1.0
4	39.72	44.39	46.79	49.23	51.72
5.7	56.61	63.25	66.67	70.15	73.70
8	79.45	88.77	93.57	98.46	103.43

Vented cabinet: F-3 (Hz)

Align.	Rg:0	0.4	0.8	0.8	1.0
4	57.60	54.49	53.07	51.74	50.48
5.7	48.25	45.64	44.46	43.34	42.29
8	40.73	38.53	37.53	36.58	35.69

Vented cabinet: Fb (Hz)

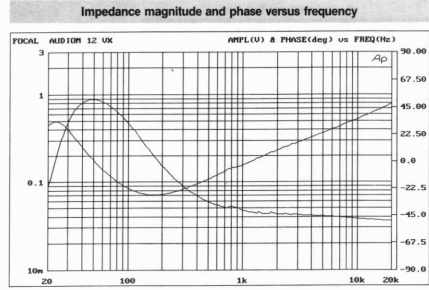
Rg:0	0.4	0.8	0.8	1.0	
Fb	44.52	42.50	41.39	40.35	39.37

Sealed cabinet: Vb (l)

Damping	Rg:0	0.4	0.8	0.8	1.0
.5	47.70	54.58	58.26	62.10	66.30
.577	34.11	38.77	41.23	43.78	46.42
.707	21.68	24.49	25.96	27.47	29.03

Sealed cabinet: F-3 (Hz)

Damping	Rg:0	0.4	0.8	0.8	1.0
.5	59.49	64.66	62.46	60.39	58.43
.577	84.61	90.45	87.97	86.01	84.16
.707	81.45	77.05	75.05	73.17	71.39

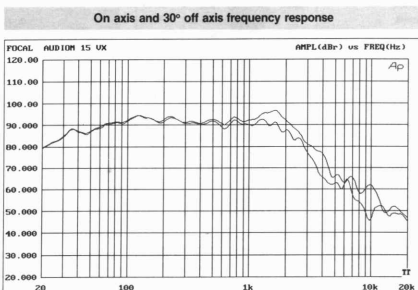


FOCAL® AUDIOM 15 VX - WOOFER

- Chassis: Alu cast. 386mm diam. x 162mm (depth). 14,200g total.
- Magnet weight: 3000g.
- Magnet dimensions: Multi magnet design exclusively from FOCAL, using a unique 12 magnets cluster configuration: low distortion and vastly improved cooling.
- Voice coil: Kapton® former, 77mm diam. x 22mm high. Edgewound copper flat wire. Super high BL ultra high power winding.
- Emissive surface: Polyglass cone, straight profile.
- Suspension: Coated foam high compliance positive half roll.
- Comment: Here again truly unique features lead to absolutely exceptional performances. Where high end fidelity meets Pro power.



Specifications	Parameter	Value	Units
Rated power handling	Fs	17.5	Hz
Nominal/Program (W)	Vas	6458	m³
Voice coil	Cts	226	
Diameter/Length (mm)	Oes	257	
Nom./Mini impedance (Ω)	Cms	1.854	
DC resistance (Ω)	Rcc	6.5	Ω
Inductance (mH)	D	33	m
Former	Sd	0.855	m²
Layers	Cas	4.598E-06	m³/N
Wire	Mas	17.99	kg/m²
Cone	Ras	1066.72	Ω.ac
Surround	Cms	0.006286	m/N
Magnet	Mms	1.316	kg
Diameter (mm)	Rms	7.8	kg/s
Weight (g)	Ces	360.32	μF
Flux density = B (T)	Les	229.64	mH
Gap height (mm)	Res	46.82	Ω
Sensitivity	Bl	19.11	N/A
2.8V/1m (dB)	Γ	145.2	ms⁻²A⁻¹
Net weight (kg)	N	1.3	%
Xmax (mm)	No	93.12	dB/1W/1m



Vented cabinet: Vb (l)

Align.	Rg:0	0.4	0.8	0.8	1.0
4	125.35	138.16	146.25	153.47	160.80
5.7	178.62	198.30	208.41	218.69	229.14
8	250.69	278.31	292.50	306.93	321.61

Vented cabinet: F-3 (Hz)

Align.	Rg:0	0.4	0.8	0.8	1.0
4	38.77	36.79	35.89	35.04	34.23
5.7	32.47	30.82	30.06	29.36	28.67
8	27.41	26.02	25.38	24.77	24.20

Vented cabinet: Fb (Hz)

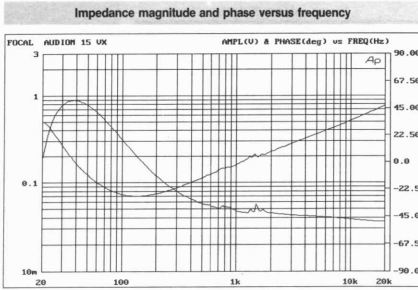
Rg:0	0.4	0.8	0.8	1.0	
Fb	30.24	28.70	27.99	27.33	26.70

Sealed cabinet: Vb (l)

Damping	Rg:0	0.4	0.8	0.8	1.0
.5	157.43	179.84	191.87	204.49	217.72
.577	111.13	125.88	133.69	141.81	150.24
.707	69.81	78.48	83.02	87.70	92.52

Sealed cabinet: F-3 (Hz)

Damping	Rg:0	0.4	0.8	0.8	1.0
.5	60.23	57.17	55.76	54.44	53.18
.577	56.95	54.05	52.72	51.47	50.28
.707	54.82	52.03	50.75	49.55	48.40

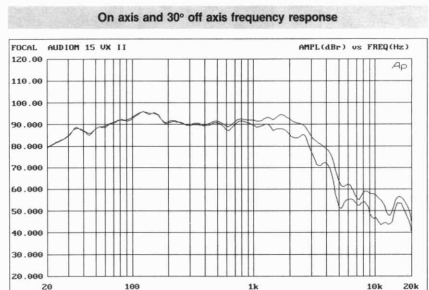


FOCAL® AUDIOM 15 VX2 - WOOFER

- Chassis: Alu cast. 386mm diam. x 162mm (depth). 14,200g total.
- Magnet weight: 3000g.
- Magnet dimensions: Multi magnet design exclusively from FOCAL, using a unique 12 magnets cluster configuration: low distortion and vastly improved cooling.
- Voice coil: Kapton® former, 77mm diam. x 22mm high. Edgewound copper flat wire. Super high BL ultra high power winding.
- Emissive surface: Polyglass cone, straight profile.
- Suspension: High compliance small pleats with Latex coating.
- Comment: Similar to Audiom 15VX. In a same 200L bass-reflex cabinet will play 2.5dB louder, trading off 7Hz in the low frequencies.



Specifications	Parameter	Value	Units
Rated power handling	Fs	19.83	Hz
Nominal/Program (W)	Vas	7177	m³
Voice coil	Cts	211	
Diameter/Length (mm)	Oes	241	
Nom./Mini impedance (Ω)	Cms	1.707	
DC resistance (Ω)	Rcc	6	Ω
Inductance (mH)	D	33	m
Former	Sd	0.855	m²
Layers	Cas	5.11E-06	m³/N
Wire	Mas	12.61	kg/m²
Cone	Ras	919.82	Ω.ac
Surround	Cms	0.006986	m/N
Magnet	Mms	0.922	kg
Diameter (mm)	Rms	6.73	kg/s
Weight (g)	Ces	322.22	μF
Flux density = B (T)	Les	199.92	mH
Gap height (mm)	Res	42.53	Ω
Sensitivity	Bl	16.92	N/A
2.8V/1m (dB)	Γ	183.45	ms⁻²A⁻¹
Net weight (kg)	N	2.24	%
Xmax (mm)	No	95.5	dB/1W/1m



Vented cabinet: Vb (l)

Align.	Rg:0	0.4	0.8	0.8	1.0
4	129.03	143.30	151.16	159.16	167.30
5.7	182.45	204.20	215.40	226.80	238.41
8	256.07	286.60	302.32	318.32	334.60

Vented cabinet: F-3 (Hz)

Align.	Rg:0	0.4	0.8	0.8	1.0
4	46.95	44.38	43.21	42.11	41.07
5.7	39.33	37.18	36.20	35.28	34.41
8	33.20	31.38	30.55	29.78	29.04

Vented cabinet: Fb (Hz)

Rg:0	0.4	0.8	0.8	1.0	
Fb	36.62	34.61	33.70	32.85	32.04

Sealed cabinet: Vb (l)

Damping	Rg:0	0.4	0.8	0.8	1.0
.5	155.83	179.05	191.49	204.51	218.15
.577	111.01	126.59	134.83	143.39	152.28
.707	70.31	79.62	84.50	89.53	94.72

Sealed cabinet: F-3 (Hz)

Damping	Rg:0	0.4	0.8	0.8	1.0
.5	72.95	68.95	67.14	65.43	63.82
.577	68.97	65.20	63.48	61.86	60.34
.707	66.40	62.76	61.11	59.55	58.08

